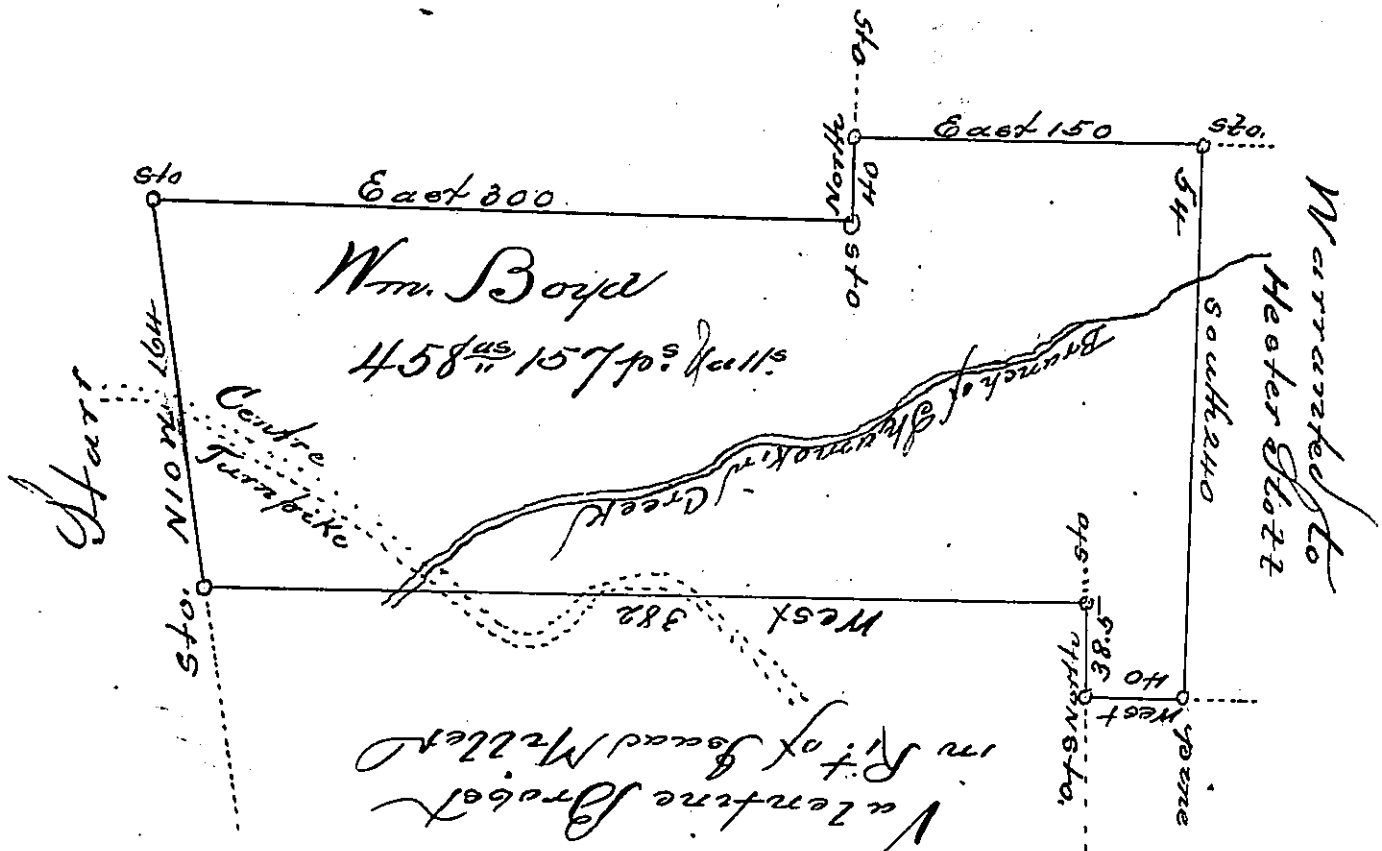


### Big Mountain



Situated in Shamokin Township, Northumberland County, on a branch of the Shamokin Creek, containing four hundred fifty eight acres & one hundred & fifty seven perches and the allowance of six feet Cent. &c. Surveyed for William Boyd on the 5<sup>th</sup> day of January 1830, by virtue of his warrant dated the 24<sup>th</sup> day of December, 1829.

To Gabriel Heister Esq,  
Surveyor General

Wm. Landis

IN TESTIMONY that the above is a copy of the original remaining on file in the Department of Internal Affairs of Pennsylvania, made conformably to an Act of Assembly approved the 16th day of February, 1833, I have hereunto set my Hand and caused the Seal of said Department to be affixed at Harrisburg, this 15<sup>th</sup> day of January, 1904

Joseph R. Brown  
Secretary of Internal Affairs.